



# Bimeda CORPORATE BROCHURE

Global Excellence in Animal Health

# Contents

INTRODUCING BIMEDA	3
BIMEDA AT A GLANCE	4
OUR VISION, MISSION AND VALUES	5
OUR GLOBAL EXPANSION	6
OUR GLOBAL PRESENCE	8
GLOBAL INNOVATION PROGRAM	9
MANUFACTURING CAPABILITIES	10
DIAGNOSTIC CAPABILITIES	14



Introducing

# Bimeda

Bimeda is a global manufacturer, marketer and distributor of veterinary pharmaceuticals, vaccines and animal health products.

Bimeda was first founded in Ireland in 1960 and has since gone on to become a global presence in the animal health industry, with Bimeda products sold in over 80 countries around the world.

Bimeda in numbers:



Bimeda products  
in over 80 countries



1000+  
employees



9 R&D and  
7 Regulatory Labs

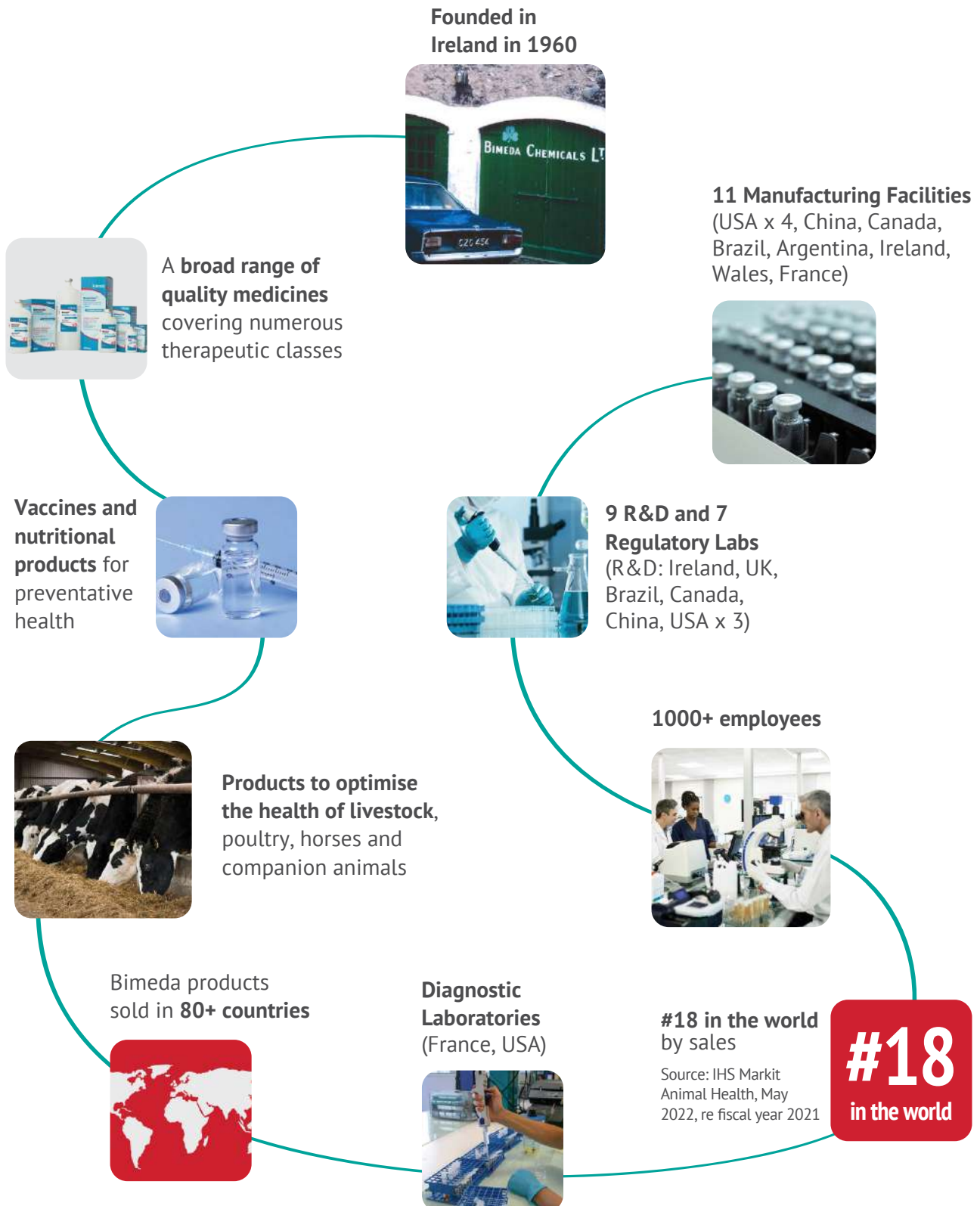


3 Diagnostic  
Labs



11 manufacturing  
facilities in 8 countries

# Bimeda at a Glance



# Our Vision

*To be the partner of choice for optimizing the wellbeing of the world's animals*



# Our Mission



*As a family-owned company with over half a century's experience in improving global animal health, we are passionate about providing our customers with efficient science-driven solutions to continuously optimize the wellbeing of animals.*

# Our Values



Collaboration



Accountability



Learning



Customer Focus



Innovation

# Our Global Expansion

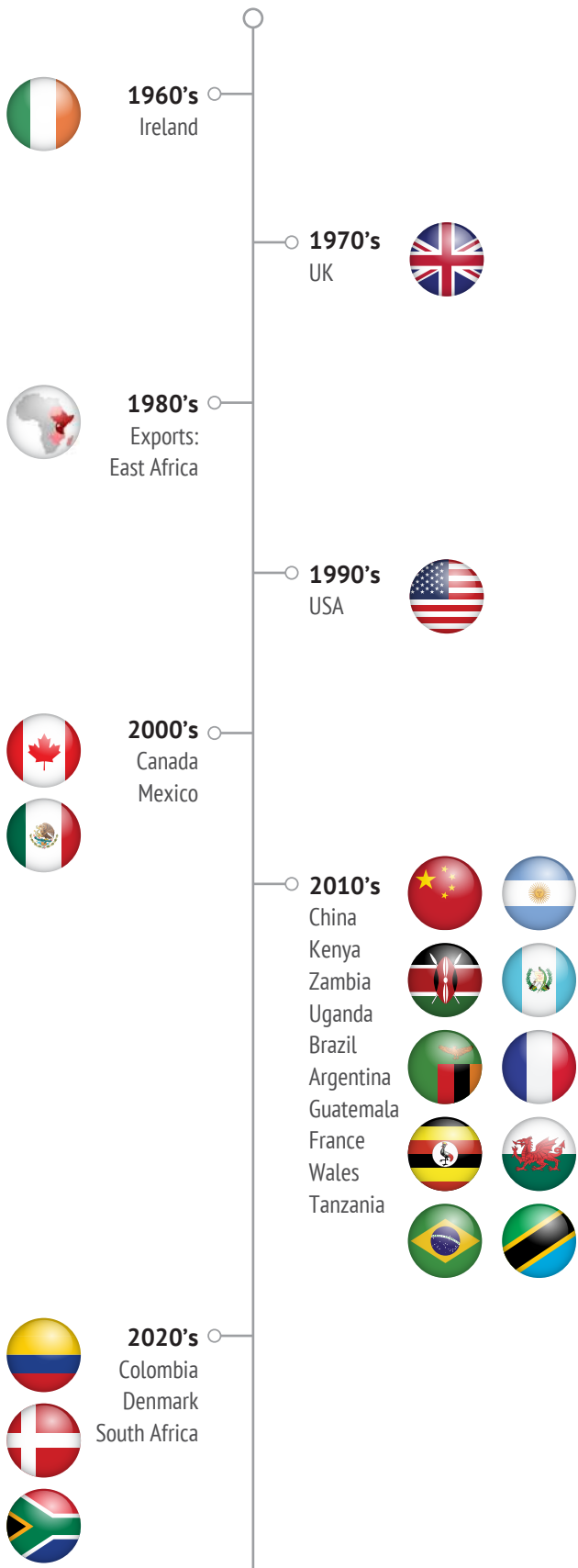
## Where there are animals, there's Bimeda.

Over 60 years Bimeda has continually expanded its geographic footprint, through both organic growth and strategic acquisitions, seeing Bimeda become a truly global leader within the animal care industry.

From cattle veterinarians in Brazil to dog lovers in Shanghai, rodeo athletes in the US, and Maasai herdsman in Kenya, Bimeda products help people around the world to optimize the health and wellbeing of the animals they care for each and every day.



Our Global Expansion  
(Greenfield and Acquisitions)



# Our Global Presence

## Optimizing The Health Of The World's Animals

Bimeda's broad product range of **vaccines, veterinary pharmaceuticals** and **nutritional products** are found in **over 80 countries worldwide**, contributing to the welfare, health, performance and productivity of livestock, poultry and companion animals on six continents.



# Global Innovation Program

## Our commitment to innovation

Innovation is in **Bimeda's DNA**. From developing the first intramammary teat sealant in the 1970s to manufacturing the world's only soluble glass multiple trace element bolus, Bimeda has over half a century's expertise in anticipating the future needs of the global animal health market.

Today, teams from our **9 research and development** laboratories collaborate on our **global innovation program**, ensuring a robust pipeline of new products, designed to exceed the expectations of our customers.



Bimeda's Global Innovation Center, Dublin, Ireland

### 9 R&D Facilities



Dublin, Ireland



Denbigh, Wales, UK



Cambridge, Ontario, Canada



St Paul, Minnesota, USA



San Angelo, Texas, USA



Monte Mor, São Paulo, Brazil



Seattle, Washington, USA



Le Sueur, Minnesota, USA



Shijiazhuang, Hebei, China



Bimeda Facility in Shijiazhuang, Hebei, China

# Manufacturing Capabilities

Bimeda's **11 manufacturing facilities** across the **USA, China, Canada, Brazil, Argentina**, the **UK, Ireland** and **France** produce a broad range of veterinary medicines, vaccines, nutritionals and animal health products designed to optimize the health, wellbeing and productivity of animals around the world.



Sterile  
injectables



Powders



Pastes  
and gels



Solid  
dose



Non-sterile  
topical solutions



Vaccines



Feed  
additives



Oral  
solutions

---

## Partnership

We are a trusted partner at all levels of the animal health industry and we:

- 01 Manufacture Bimeda-branded products
- 02 Partner with major companies for the development and delivery of new products and service
- 03 Manufacture private label products for selected Bimeda partners

# North America Manufacturing



## Bimeda USA

**Le Sueur, Minnesota**

### Capabilities

Solid Dosage Forms  
Feed Additives  
Endo/Ecto Parasiticides  
Oral Solutions

Regulation: FDA/EU/CN



## Bimeda USA

**Irwindale, California**

### Capabilities

Penicillin Sterile Suspensions  
Non-Sterile Powders

Regulation: FDA/EU/CN



## Bimeda Biologicals

**San Angelo, Texas**

### Capabilities

Modified-live Commercial Vaccines  
Inactivated Commercial Vaccines  
Autogenous Vaccines

Regulation: USDA



## AquaTactics Fish Health

**Seattle, Washington**

### Capabilities

Fish Veterinary Services and Vaccines

Regulation: USDA



## **Bimeda Canada** **Cambridge, Ontario**

**Capabilities**  
Sterile Solutions  
Syringe-Based Pastes/Gels

Regulation: FDA/EU/CN

# **Europe Manufacturing**



## **Bimeda Ireland** **Dublin, Ireland**

**Capabilities**  
Endo/Ecto Parasiticides  
Disinfectants  
Nutritional Liquids

Regulation: EU



## **Bimeda Telsol** **Denbigh, Wales, UK**

**Capabilities**  
Soluble Glass Trace Element Boluses

Regulation: EU



## **Octavet** **Dardilly, France**

**Capabilities**  
Nutritional Powders

Regulation: Accreditation "α FR 69 072 105" delivered by French Authorities

# Latin America Manufacturing



## Bimeda Brazil

**Monte Mor, São Paulo**

### Capabilities

Sterile Solutions  
Non-Sterile Liquids/Pastes  
Endo/Ectoparasiticides

Regulation: MAPA



## Ruminal S.A.

**Florida Oeste, Greater Buenos Aires**

### Capabilities

Pastes  
Powders  
Tablets

Regulation: Senasa

# Asia Manufacturing



## Bimeda China

**Shijiazhuang, Hebei**

### Capabilities

Sterile Injections

Regulation:

- Chinese Ministry of Agriculture
- APVMA (Australia)
- National Drug-Authority-Uganda (covering Uganda and Kenya)

# Diagnostics and Analytics

Bimeda also offers a range of diagnostic and analytical services, through diagnostic laboratories in France and the USA.



Grezieu-La-Varenne-France



#### Analysis Services Offered:

- Trace elements
- Vitamins
- Minerals

#### Regulation:

NF EN ISO 17025:2017



San Angelo, Texas



#### Analysis Services Offered:

- Microorganism genetic analysis and characterization
- Microorganism serotyping
- Diagnostics for antibiotic sensitivity
- Virus isolation and identification
- Bacteria isolation and identification



St. Paul, Minnesota



#### Key Services and Capabilities:

- Bacteria/Viral High Throughput Sequencing (HTS) and analysis
- Mycoplasma ID PCR (*M. hyopneumoniae*, *M. hyorhinis*, *M. hyosynoviae*)
- *M. hyopneumoniae*, *M. hyorhinis*, *M. hyosynoviae* Quantitative PCR
- PRRSV Quantitative PCR



**Over 6 Decades of  
Global Excellence in Animal Health**

To find out more, visit [Bimeda.com](http://Bimeda.com)



[Bimeda.com](http://Bimeda.com) / [Bimedacareers.com](http://Bimedacareers.com)